



# SOUND SUPPRESSION + BALLISTIC PROTECTION PANEL SYSTEMS

Depend on us to provide  
sound and thermal emissions  
control, and protect your assets

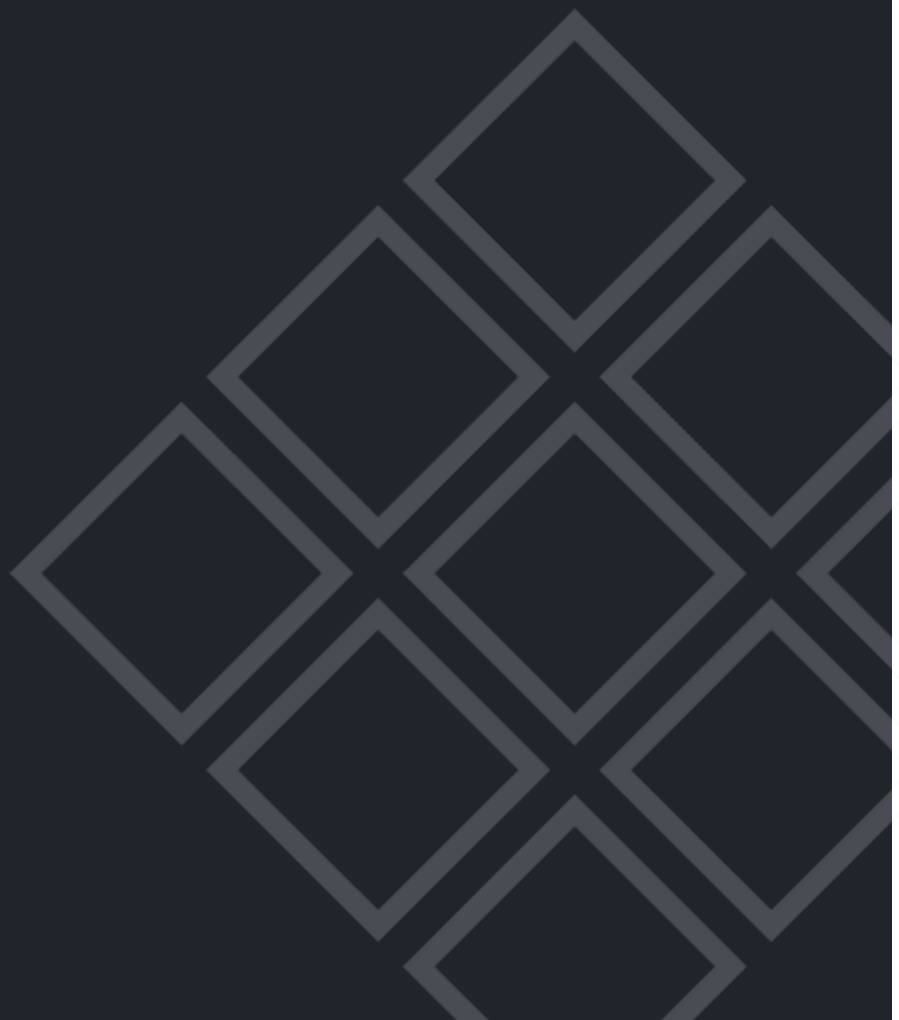


The  
Box  
Group

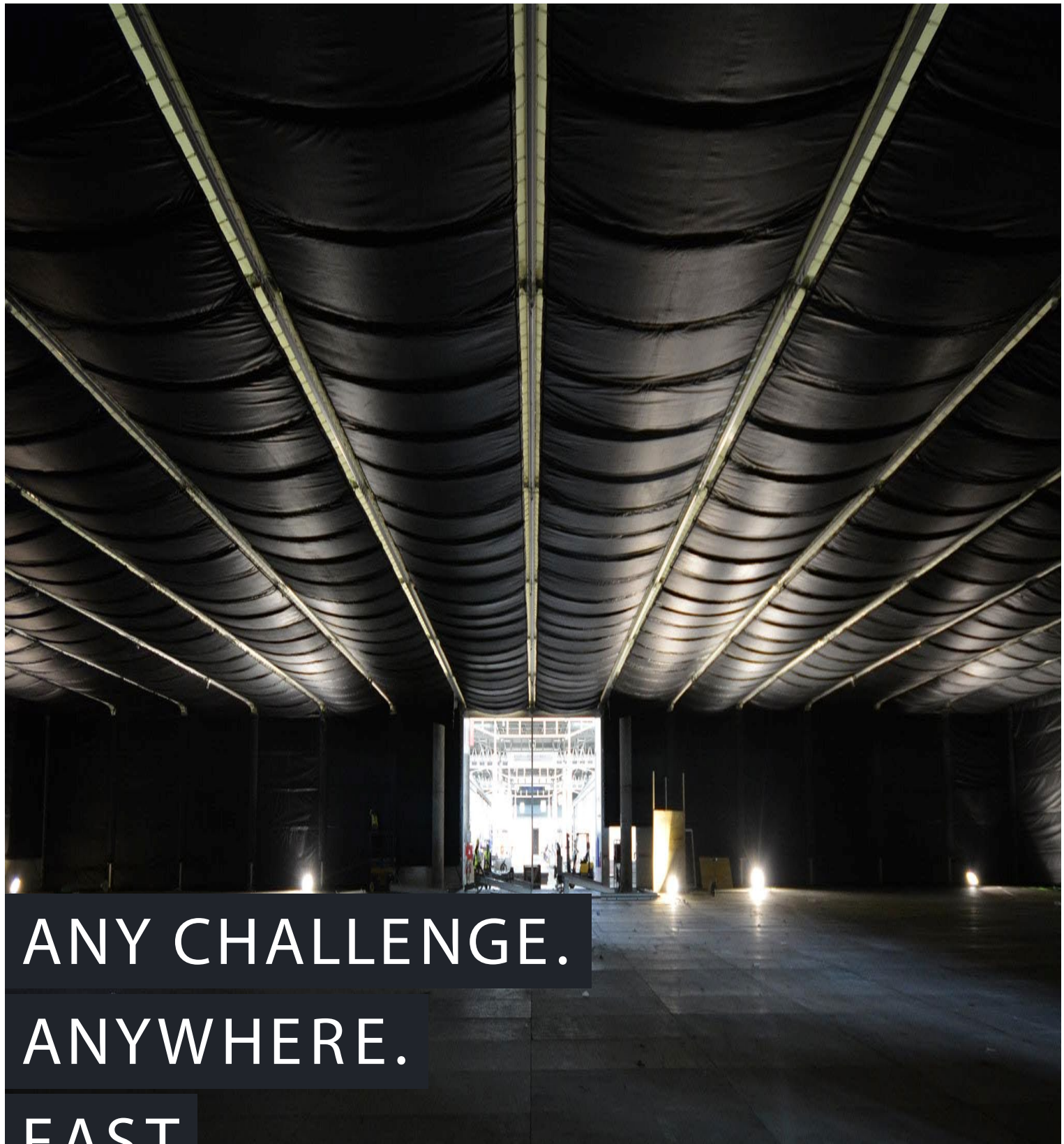


# CONTENTS

Introduction	03
Acoustic and Thermal Solutions	06
• Tabs ASP Acoustic Barriers	08
• Tabs ProTherm Barriers	10
Ballistic and Fragmentation Protection	12
• Tabs CoBRA Ballistic Panels	14
• Tabs CoBRA Personnel Shield	17
About us	18







ANY CHALLENGE.

ANYWHERE.

FAST



ENABLING TEMPORARY  
SPACES IN CHALLENGING  
PLACES. SINCE 1999

We know the integrity of your temporary operating environment is critical to your success.

Get it right, and your project can align and succeed. Get it wrong and delays accumulate, deadlines are missed and outcomes fall short of the required standard. Or can even be catastrophic.

At The Box Group we enable the creation of dependable temporary spaces in the most demanding and urgent situations.

Our solutions are about much more than the provision of the right kit; they combine our experience with inventive thinking, sustainability, and a can do, positive mindset.

So you can meet each logistical challenge, enable operations and successfully complete every task, **from the ground, up.**



WE GO IN WITH YOU AT  
BASE LEVEL, TO DELIVER  
THE FOUNDATIONS YOU  
NEED TO GET  
OPERATIONAL.





## WE BACK **MILITARY** **FORCES TO LARGE-** **SCALE EVENTS** ACROSS THE WORLD

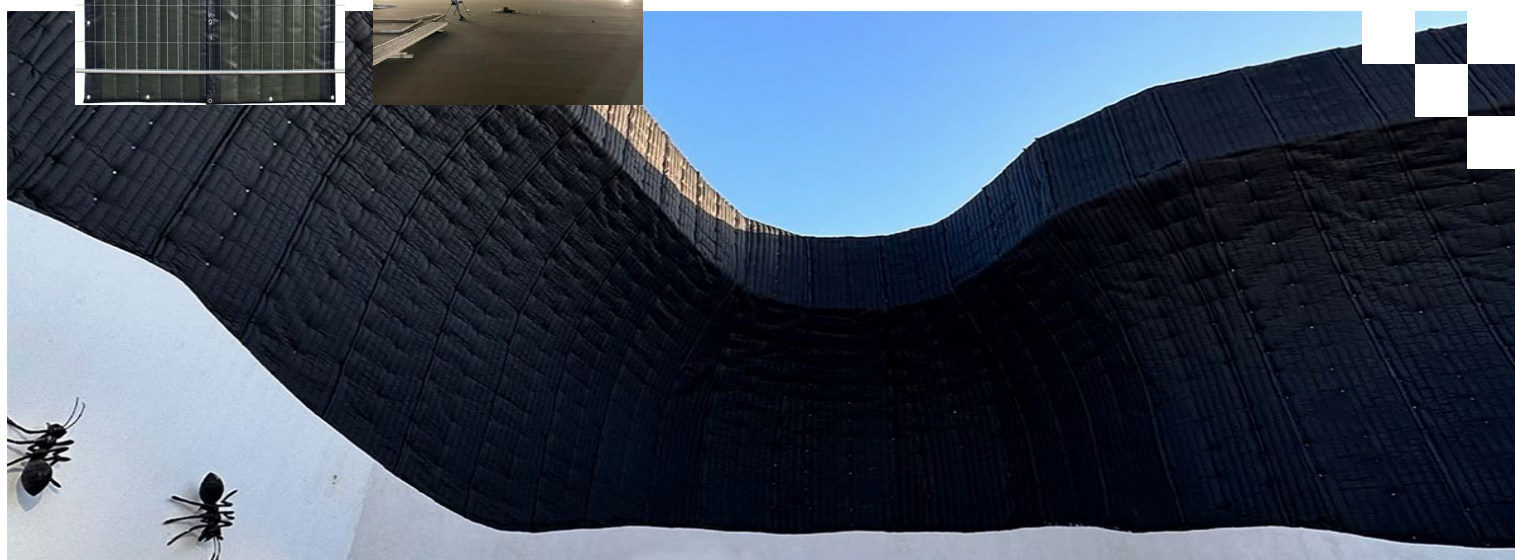
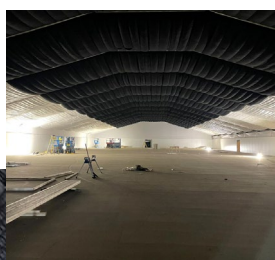
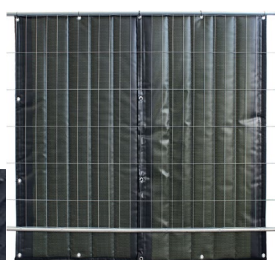
We're trusted providers to many industries as our flexible, easy-to-install barrier solutions are suited to practically any worksite or location.

In high-stakes scenarios and testing timescales, we can deliver:

- Acoustic insulation fencing and barrier systems
- Demountable security and sound barriers to create the acoustic environment performers demand.
- Highly adaptable ballistic protection panels and shields to safeguard against explosive fragmentation impacts.
- Fully customisable barriers manufactured to any length for specific client requirements.

All our solutions are tough, reliable, flexible, man-handable, quiet and secure.

We understand the importance of sustainability to your operation's objectives and values and is high on our list of shared priorities. So, we design sustainability into our products, work with the lowest footprint manufacturers and used recycled components wherever possible.



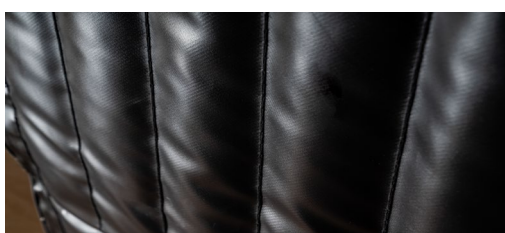
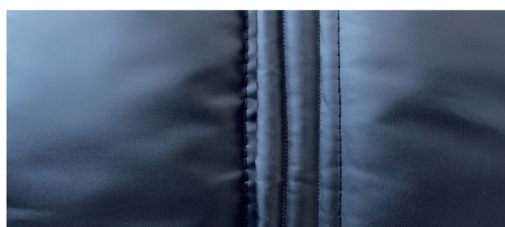
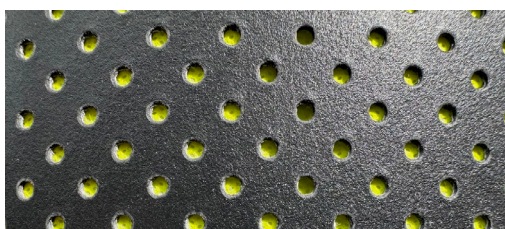




# ACOUSTIC SUPPRESSION + THERMAL PROTECTION PANEL SYSTEMS



## UNRIVALLED **SOUND** **SUPPRESSION** ACOUSTIC SYSTEMS



In today's world, where noise cannot be avoided, our acoustic barriers offer the solution to significantly reduce noise pollution.

As this issue of noise pollution becomes an increasingly prominent problem in densely populated modern environments, acoustic sound barriers are seen and been proven to be the most effective solution to reduce excessive and unwanted noise.

In noise-sensitive sites, our advanced acoustic barrier materials reduce the impact of sound and improve the work environment.

Our modular system of acoustic panels provides cost-effective, sustainable noise management for a multitude of projects - whether indoor or outdoor, short-term or long-term.

### KEY BENEFITS

#### Affordable

Offering the best in cost vs performance. Modular manufacturing process developed over many years to create the protection you need efficiently, at an affordable price.

#### Man-handable

Light, compact and durable. Designed to simplify portability, storage and transport, and can be quickly deployed and taken down without specialist skills.

#### Fire retardant, weather-proofed and moisture resistant

The resilience and consistent performance you need to be confident your operations won't be disrupted.

#### Complete control

Customise the sound and fragmentation protection to match the risk of the environment you're operating in.



# TABS ASP Acoustic Barriers



Offering high performance yet cost-effective noise management, the ASP patented acoustic technology is suitable for short-term and long-term projects in the fields of construction, demolition, maintenance, renovation and utilities through to military operations and special events.



At the heart of the ASP panel sits a multi-layer core, enclosed in a composite outer shell. Specialist chain stitching ensures that a consistent 50mm depth is maintained throughout each ASP acoustic barrier to provide full, edge-to-edge absorption.

The patented Velcro fastening on TABS ASP acoustic barriers creates a seamless noise barrier unlike any other product on the market. The Velcro connection completely breaks the line of sight and provides superior noise reduction.



## Wherever noise control is needed

- Noise-sensitive construction sites – urban and residential areas
- Outdoor events – reducing loud noise and music
- Temporary perimeter fencing – privacy and noise reduction
- Safety critical installations that require flame retardant materials – occupied building and industrial works



## The lightweight solution for minimising noise pollution

- Proven noise reduction
- Independently tested
- Lightweight alternative to bulky materials
- Supplied as panels for easy installation and transportation
- Custom sizing, branding and printing options

The composite barrier is fully demountable and reusable. In addition to excellent acoustic and thermal characteristics TABS ASP barriers also combine an integral condensation, vapour, radiant and smoke barrier.

With full ownership of the production process, The Box Group can modify and customise each panel to meet specific requirements – we can manufacture to any length plus incorporate additional layers and materials to enhance thermal resistance or acoustic insulation and absorption.



# TABS ASP Acoustic Barriers



## SPECIFICATION

ASP-00-18DB  
CLASS C ABSORPTION- FR  
WEIGHT: 2.3 KGM<sup>2</sup>

ASP-02-25DB  
CLASS C ABSORPTION- FR  
WEIGHT: 4.3 KGM<sup>2</sup>

ASP-04-27DB  
CLASS C ABSORPTION- FR  
WEIGHT: 6.32 KGM<sup>2</sup>

R VALUE  
1.55 M2K/W

LAMBDA  
0.045 W/mK

DIMENSIONS (STANDARD)  
1220mm x 2050mm x 50mm

WEIGHT  
STARTING FROM 2.3 KGM<sup>2</sup>

## LAYERS / SURFACES

- Industrial black surface aesthetic
- Resilient strong surfaces
- Heavy duty industrial construction
- Polyester FR insulated core- Edge to edge acoustic performance
- Hydrophobic core means acoustic performance is not compromised with moisture or age
- Edge to edge acoustic performance
- All materials sourced within the UK and EU
- Barriers can be installed vertically, horizontally or on a pitch
- Patented keder connection fixings on all edges

## CERTIFICATES

SRI 18 dB Rw  
(UNI EN ISO10140-2:2021)

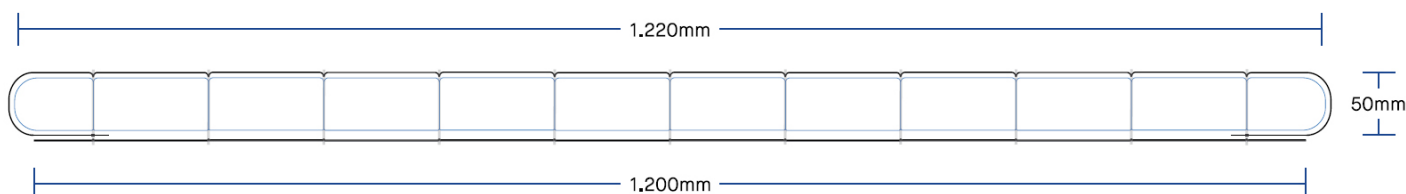
SRI 44 dB Rw  
(UNI EN ISO10140-2:2021)  
Double panel

Class C sound absorption  
 $\alpha_w = 0.75$  (UNI EN ISO 354:2003)

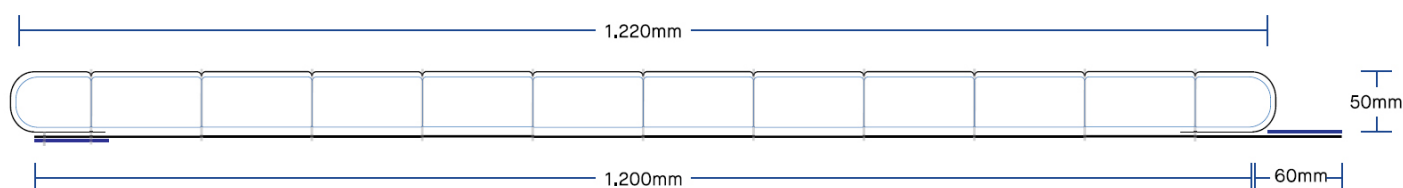
**Fire Certificates:**  
PVC on face and perforated Bs2-d0  
(EN 13501-1:2019)  
Polyester fibrous insulated core Bs1-d0  
(EN 13501-1:2019)

## ASP ACOUSTIC BARRIER CROSS-SECTION

### STANDARD CLASS A COMPOSITE



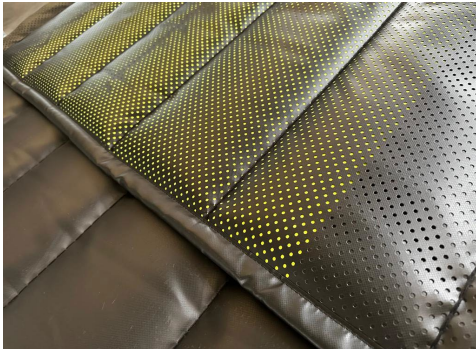
### SPECIALIST VELCRO FASTENING SYSTEM





# TABS ProTherm Barriers

Tabs ProTherm thermal, acoustic composite barriers are lightweight, scalable, and provide top-tier protection for your frontline forces.



**Customisable, scalable, multifunction protection within a portable, demountable, reusable system, built for rough handling in challenging environments.**

Designed to shield from a variety of threats, TABS ProTherm outperforms all existing barriers in every department. These robust, multi-functional panels are meticulously engineered to deliver superior thermal and acoustic insulation in a wide range of emergency and frontline situations.



TABS ProTherm offers dynamic solutions that can be customised for diverse needs and operations such as trenches or compromised buildings. Their adaptability and formidable durability make them indispensable assets in enhancing safety and operational effectiveness in a range of hostile environments.

For example, in a cold environment, the barriers can be adjusted to provide higher levels of insulation, ensuring the necessary protection where it is most needed, and allowing frontline forces to operate efficiently in harsh climates.

## FEATURES + BENEFITS

- Resilient strong surfaces and heavy-duty industrial construction help protect soldiers and keep them warm
- FR Polyester fibrous core
- Hydrophobic core and high strength velcro ensure performance is not compromised with moisture or age
- Choice of colours including industrial black, NATO Green and camouflage surface finish plus branding available
- Demountable, re-useable, acoustic barriers deliver unparalleled sound & thermal insulation.
- Range of backing options
- Barriers can be installed vertically, horizontally or on a pitch
- Machine finished roll ends
- All materials are UK/EU origin
- Patented Keder connection fixings on all thermal barriers
- Manufactured to any length required

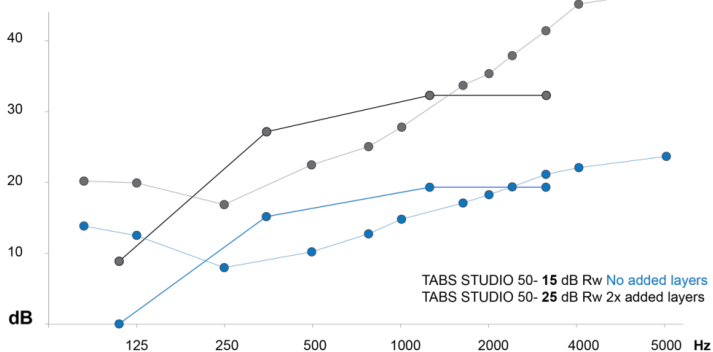


# TABS ProTherm Barriers

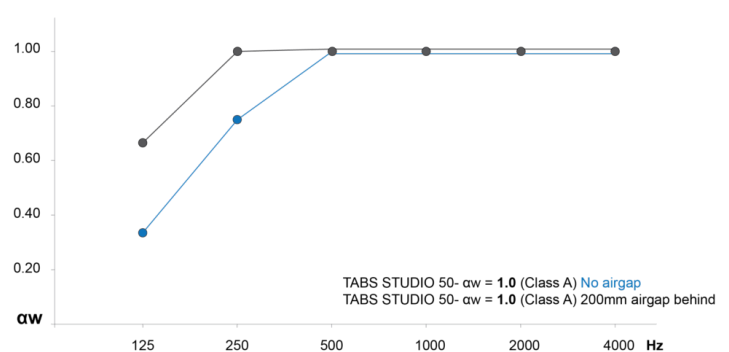


Dimensions	1.220 mm x UNLIMITED mm x 50mm
Weight	1.83 Kgm2 STANDARD 3.83 Kgm2 2x GLASS LAYERS 4.83 Kgm2 3x GLASS LAYERS
R Value	1.55 m2K/W
Performance	<p>Class A sound absorption  <math>\alpha_w = 1.0</math> (UNI EN ISO 354:2003)  <math>\alpha_w = 1.0</math> (BS EN ISO 11654:1997)</p> <p>SRI 15 dB Rw (UNI EN ISO 10140-2:2021)  SRI 27 dB Rw (UNI EN ISO 10140-2:2021)</p> <p>with 3x internal layers of laminated glass cloth  Density 22.84 kg/m3  Thermal Resistance 1.55 m2K/W (UNI EN ISO 12667:2002)  Thermal conductivity 0.045 W/mK (UNI EN ISO 12667:2002)  B-s1,d0 Fire performance (BS EN 13501-1:2018) (2)  B-s1,d0 Fire performance (UNI EN 13823:2020) (3)  B-s1,d0 Fire performance</p>

SOUND REDUCTION INDEX (R) BS EN ISO 10140-2:2010



SOUND ABSORPTION COEFFICIENT BS EN ISO 354:2003







SCALEABLE, PORTABLE  
BALLISTIC BARRIERS +  
FRAGMENTATION PROTECTION



## ESSENTIAL PROTECTION FOR EQUIPMENT AND PERSONNEL



Comprehensive range of sustainable thermal suppression and protection barrier panel systems for the toughest challenges and hostile environments.

Our tried and tested modular manufacturing process creates the protection you need at an affordable price.



Designed to deliver consistent performance over a long-life. The panels are weather proofed, moisture resistant and built to last. Barrier composites are fire-retardant and come with built-in protection from water, condensation and UV. Patented jointing system ensures the best acoustic seal between barriers.



Our modular approach allows you to design the system and incorporate the level of protection you need for your operation.

Advanced IR fabric allows for thermal and acoustic signature management in any environment to help keep your personnel and equipment safe.



Trusted ballistic and explosive fragmentation barriers can be integrated for higher levels of protection:

Our panels are UL 752 Level 8 certified\* to stop bullets in their tracks (equal to NIJ 0108.01 Level III requirements).

\*Products developed to meet specification requirements may need additional testing and accreditation.



# Tabs CoBRA Ballistic Panels

Engineered for supreme ballistic / blast fragmentation resistance, these lightweight, scalable panels safeguard against explosive fragmentation impacts.



PATENT PENDING, INCLUDING EUROPEAN  
PATENT APPLICATION NO. 23187339.9

**SCALABLE, MOVABLE  
BLAST BARRIERS  
CREATING SAFE  
ZONES ON DEMAND**

**Manufactured with certified Aramid fabrics, Tabs CoBRA panels offer resilient defence against ballistic and explosive threats. Highly adaptable, these panels can be seamlessly integrated into a range of tactical environments to safeguard both personnel and high-value assets (HVAs).**

Tabs CoBRA panels represent tactical resilience, offering robust and flexible protection in a multitude of critical scenarios.

The modular design allows for customisation in size and additional protective features such as insulation layers and RF EMI shielding, ensuring comprehensive and tailored defensive solutions.

## **Purpose Built**

Specifically designed to defend against explosive fragmentation impacts and various ballistic threats.

## **Customisable**

The ballistic performance is scalable and adjustable in terms of width, length, and height, through the integration of additional layers of materials, offering enhanced performance and flexibility in deployment.

## **Certified Durability**

Manufactured using certified Aramid-based technical fabrics, guaranteeing robust performance plus UD materials to boost ballistic capability.

## **Strategic Protection**

Ideal for safeguarding high-value assets and personnel in high risk scenarios.



# Tabs CoBRA Ballistic Panels

Dimensions	1.450 mm x 2.050 mm x 10 mm STANDARD PANEL 1.450 mm x UNLIMITED mm x 10 mm
Performance - T1541WR/L0B	STANAG 2920 (ENAC) AEP 2920:2015 ED.A VS 2:2016 V50 1.1g <b>442.3</b> m/s ( <b>1,451</b> ft/s} 4.28 kgm <sup>2</sup> (9.4 lbsft <sup>2</sup> ) 12.5kg STANDARD PANEL (27.5 lbs)
Performance - T1541WR/L16 (2x PANELS}	STANAG 2920 (ENAC) AEP 2920:2015 ED.A VS 2:2016 V50 1.1g <b>593</b> m/s, ( <b>1,946</b> ft/s) 8.56 kgm <sup>2</sup> (15.5 lbsft <sup>2</sup> ) 25.1 kg STANDARD PANEL (55.3 lbs)
Performance - T1541WRIL24 (3x PANELS}	STANAG 2920 (ENAC) AEP 2920:2015 ED.AVS 2:2016 V50 1.1g <b>706.4</b> m/s ( <b>2,318</b> ft/s) 12.84 kgm <sup>2</sup> (26.8 lbsft <sup>2</sup> ) 37.5 kg STANDARD PANEL (82.7 lbs)
Performance - T1541WR/L32 (4x PANELS}	STANAG 2920 (IENAC) AEP 2920:2015 ED.A VS 2:2016 V50 1.1g <b>798.4</b> m/s ( <b>2,619</b> ft/s) 4.28 kgm <sup>2</sup> (9.4 lbsft <sup>2</sup> ) 12.5 kg STANDARD PANEL (27.5 lbs)
Certificates	<p>CLASS C SOUND ABSORPTION aw = 0.5 (UNI EN ISO 354:2003}</p> <p>SRI 27 dB Rw 8x Aramid layers {UNI EN ISO 10140-2:2021}</p> <p>THERMAL RESISTANCE 1.55 m<sup>2</sup>K/W {UNI EN ISO 12667:2002}</p> <p>THERMAL CONDUCTIVITY 0.045 W/mK {UNI EN ISO 12667:2002}</p> <p>B-s1,d0 FIRE PERFORMANCE {BS EN ISO 13501-1:2018}</p> <p>B-s1,d0 FIRE PERFORMANCE {UNI EN ISO 13823:2020}</p>



# Tabs CoBRA Ballistic Panels

## External surfaces

600gsm MIL-SPEC 100% POLYPROPYLENE F.R.  
ABRASION - 80,000 MARTINDALE CYCLES  
FASTNESS TO RUBBING WET 4/5, DRY 4/5  
{EN ISO 105-X12}  
LAMINATED WITH CARBON FIBRE FELT AND PVC

## Internal layers

1670 DTEX ARAMID YARN 400gsm {UNI EN 12127}  
150cm (UNI EN 1773)  
WATERPROOF RESIN TREATMENT  
KEVLAR THREAD QUILTING  
INDUSTRIAL VELCRO CONNECTION SYSTEM

## Additional Information

INDUSTRIAL MIL-SPEC BLACK INNER  
SURFACE  
INDUSTRIAL MIL-SPEC GREEN OUTER  
SURFACE  
CAMOUFLAGE AND COLOURS AVAILABLE  
RANGE OF INTERNAL LAYER OPTIONS  
FIXINGS, STRAPS, CONNECTIONS, PER  
REQUIREMENT

HIGHEST QUALITY PERFORMANCE  
MATERIALS  
ALL MATERIALS ARE EU/UK ORIGIN

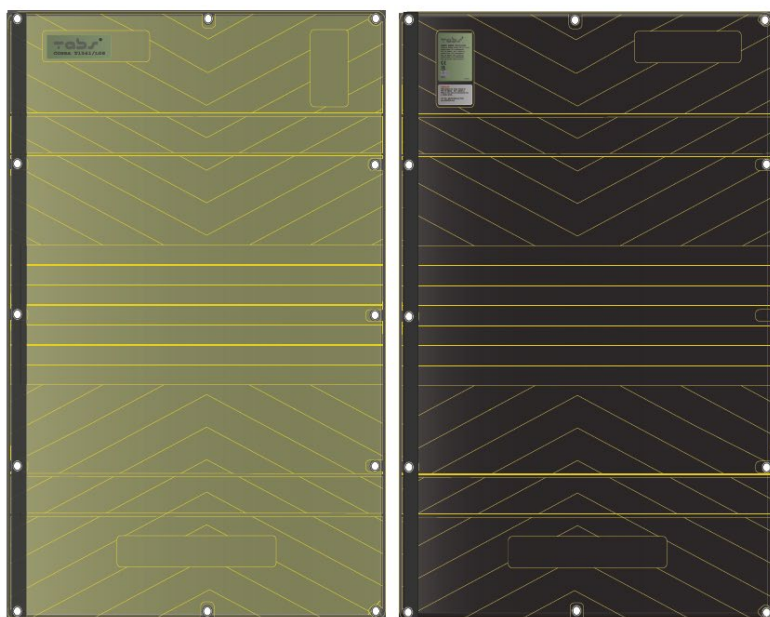
HEIGHT/LENGTH IS SCALABLE - ANY LENGTH POSSIBLE  
SPECIFIC WIDTHS CAN BE MADE FOR LARGE ORDERS

DEMOUNTABLE, RESUSABLE, RESILIENT

AUTOMATED MANUFACTURE PROCESSES  
HIGH CAPACITY  
IMMEDIATE LEADTIMES

EXTERNAL SURFACE 1450mm x 2050mm INTERNAL SURFACE 1450MM X 2050mm

50mm VELCRO JOINING MECHANISM ON LONG LENGTH



Specifications are not warranted and are subject to change without notice. The Box Group and all persons acting on its behalf disclaim any and all liability for any errors, inaccuracies or incompleteness contained in any datasheet or in any other disclosure relating to any product.

Other company product names may be trademarks or service marks of others.



# Tabs CoBRA Personnel Shield



Developed from the innovative Tabs CoBRA Panels, the CoBRA Personnel Shield embodies the next evolution in bespoke defensive solutions.



**CoBRA Personnel Shield is designed to safeguard personnel and high-value assets from damage caused by firearms, explosive fragmentation and associated debris.**

Constructed using an advanced automated process with durable materials, the shield is made to withstand the challenges of operational settings, guaranteeing reliable performance under critical conditions.

## User Friendly

Created with the user in mind, the shield is straightforward in design, ensuring it is easy to use, practical and functional.

## Versatile

The Cobra Personnel Shield is not just for personal protection. The dynamic design allows it to double up as a wall panel, increasing its functionality.

## Certified Durability

Manufactured using certified Aramid-based technical fabrics, guaranteeing robust performance.

## FEATURES + BENEFITS

- Can be used as a mattress, providing insulated comfort
- No heat signature due to thermal insulation layer - hides potential targets
- MIL-SPEC Polypropylene 600gsm
- FR External surfaces
- Abrasion- 80,000 Martindale cycles
- Laminated with Carbon fibre felt and PVC
- 1670 DTEX ARAMID (x8) 400gsm
- (UNI EN 12127)
- Waterproof resin treatment to Aramid layers
- Zero Down insulation layer
- Straps to allow barrier to be worn.
- Loop straps to use as a breaching shield
- Straps to create an evacuation stretcher
- Attached groundsheet (rear face)-
- Totally waterproof
- Ability to climb/hide inside barrier
- Ability to combine barriers to create a wall/barrier
- Shield combine in all directions using Velcro and Keder
- Can be used in vehicles
- Protects when moving through open terrain
- Automated manufacture processes
- High capacity
- Immediate lead times



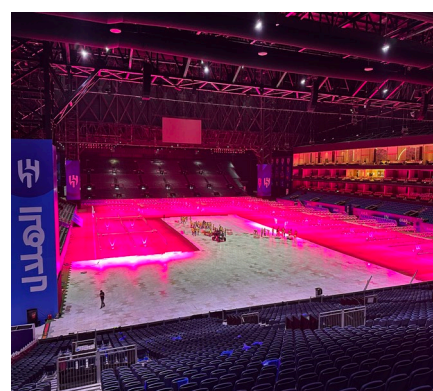


WE'RE HERE  
TO ASSIST



## PREPARATION IS EVERYTHING

- Temporary operating environments can throw up a wide variety of conditions. Many of them challenging. Some of them life-threatening. Proper planning and project management mitigates your risks.
- Our solutions combine our experience with inventive thinking and a can do, positive mindset – to meet logistical challenges, enable operations and successfully complete missions.
- We offer a comprehensive range of ‘military grade’ infrastructure solutions developed to perform under the most challenging conditions.
- We deliver the core foundations for the environment you are working in. Tough overlay for any purpose and any load, reliable autonomous and sustainable power generation along with protective barriers to control your sound and thermal environment with the option to add fragmentation protection to keep your assets safe.
- Our solutions are about much more than the provision of the right kit: they combine with our experience, our inventive thinking and can-do mindset to mitigate risk, overcome logistical challenges so you can focus on completing your project.
- The Box Group is the reliable partner you need when there’s zero-room for error.
- We work closely together with you and our strategic partners to deliver practical, reliable and high-quality solutions. We are by your side from day one.



Any Challenge. Anywhere



## WE STAND SHOULDER TO SHOULDER

Trust our team to support your objectives and back you all the way. We are:



### GROUNDING

Our wide-ranging experience and pragmatic approach mean that we always consider the practicalities required to deliver incredible spaces. We build solid foundations from the start.



### RESILIENT

Every installation presents challenges. When we encounter obstacles, we think with a positive 'can do' mindset and find ways to overcome them. We don't give up.



### INVENTIVE

We thrive on 'one-off' or unusual scenarios where there may be no known precedent. That's when we adapt our thinking, products and our mindset to deliver a truly innovative solution. We find a way.

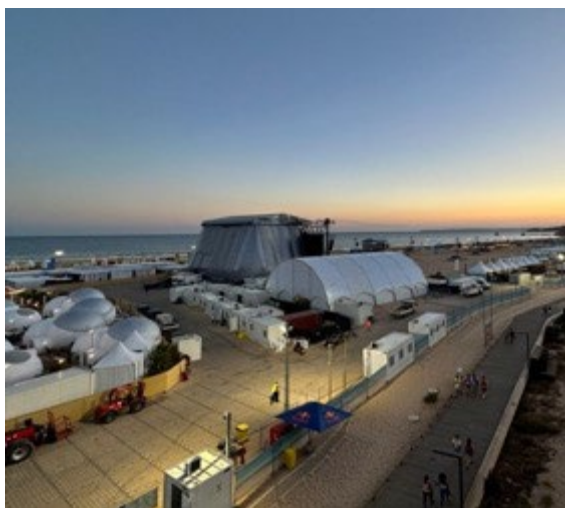
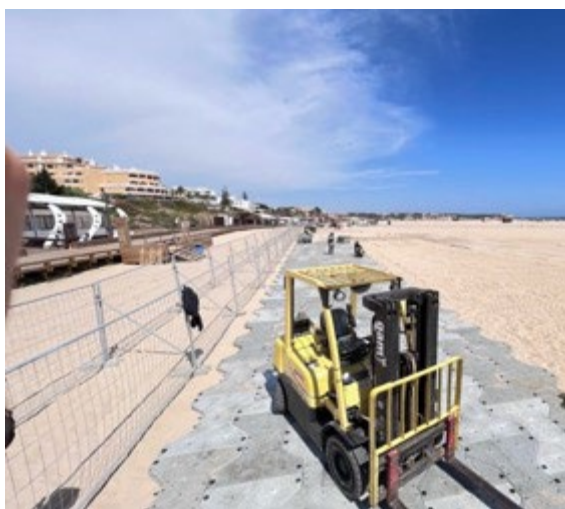


### DEPENDABLE

We know that we'll only earn your trust if we deliver on our promises, so we go further to deliver what you need every single day, no matter how demanding the challenge. We won't let you down.



## TRIED & TESTED IN LOCATIONS WORLDWIDE



- Our solutions cover the globe. Our experience spans over two decades.
- In the most challenging conditions and testing timescales, when there's no room for error, our clients trust us to think and deliver.
- We are ISO 9001 Quality Management certified
- We work on the ground with:



**BELSS**

**VIACOMCBS**



**WORLD  
ATHLETICS.**



LOSBERGER DE BOER

**STAMINA**  
PRODUCTIONS



**UTILIS** SAS



**ESG**



**BRON**

**NORWICH CITY  
FOOTBALL CLUB**

**BLADON**  
MICRO TURBINE

**IFLUID**





John Davy  
CEO  
+44(0)7798 567041  
john.davy@theboxgrp.com



Ben Hodson  
Business Development Director  
+44(0)7824 886180  
ben.hodson@theboxgrp.com



Will Leuchars  
Business Development Associate  
+44(0)7748 960398  
will.leuchars@theboxgrp.com



## THANK YOU

When the outcome of your mission or operation hinges on having the solid foundations for your temporary structures in place, fast.

**We're here for you.**

---

The Box Group  
17-19 ST Georges Street  
Norwich  
NR3 1AB

**T: +44 (0)203 286 7463**

**E: [hello@theboxgrp.com](mailto:hello@theboxgrp.com)**

---

